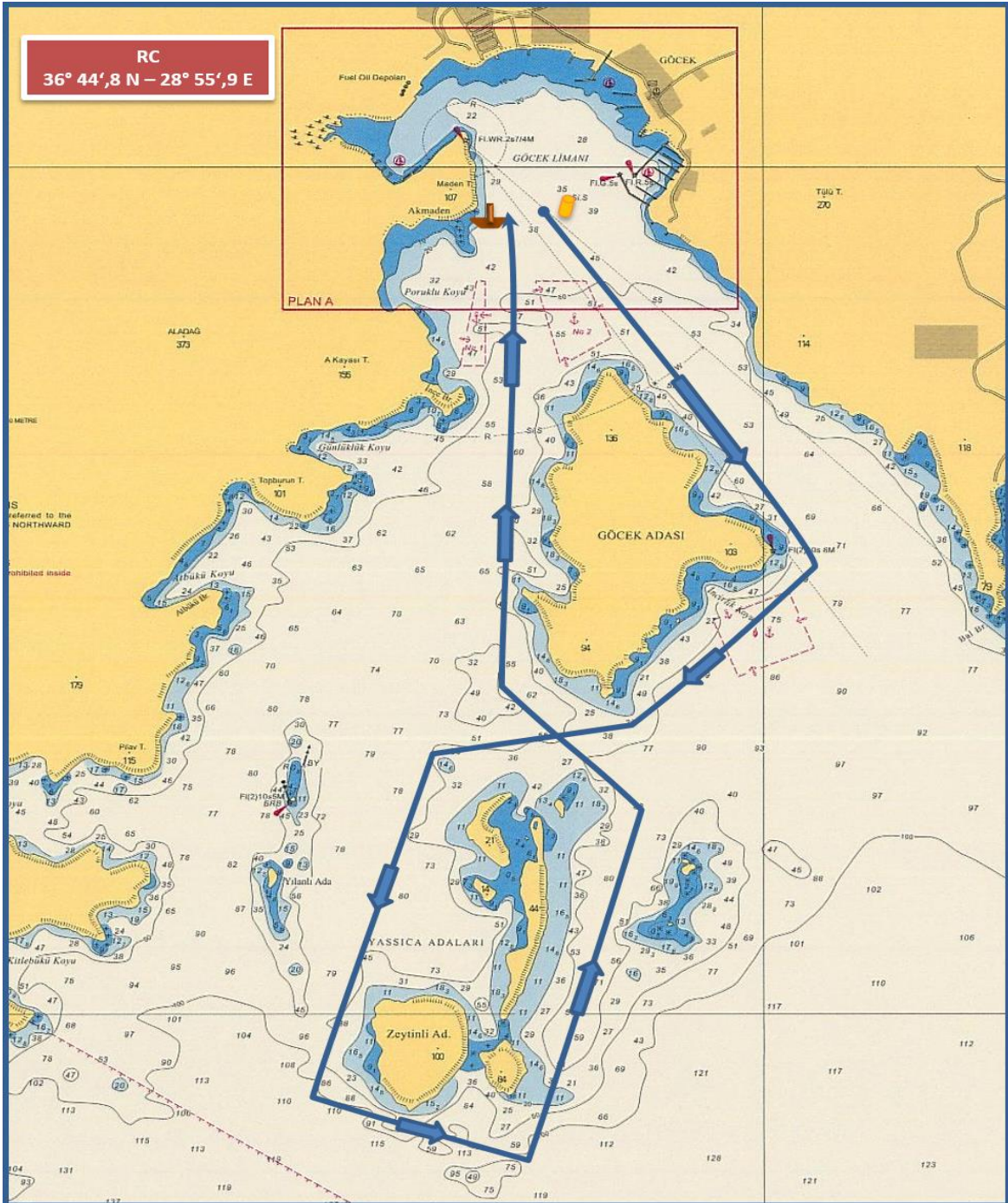


### COURSE (ROTA) 2F - IRC & IRC CHARTER & CHARTER & FRESHMAN CLASSES

#### ALL CLASSES

- START (GÖCEK) pass GÖCEK ISLAND to starboard, pass YASSICA ISLAND to port, pass ZEYTİNLİ ISLAND to port, pass YASSICA ISLAND to port, pass GÖCEK ISLAND to starboard, FINISH (GÖCEK) DISTANCE :~ 9,0 NM
- START (GÖCEK), GÖCEK ADASI sancakta geçiş, YASSICA ADALARI iskelede geçiş, ZEYTİNLİ ADA iskelede geçiş, YASSICA ADA iskelede geçiş, GÖCEK ADASI sancakta geçiş, FINISH (GÖCEK koyu içi) MESAFE : ~ 9,0 DM



The place of RC boat and marks at the starting and finishing lines are approximate.  
Start ve finish hatlarındaki şamandıra ve komite botu yerleri yaklaşıkştir.