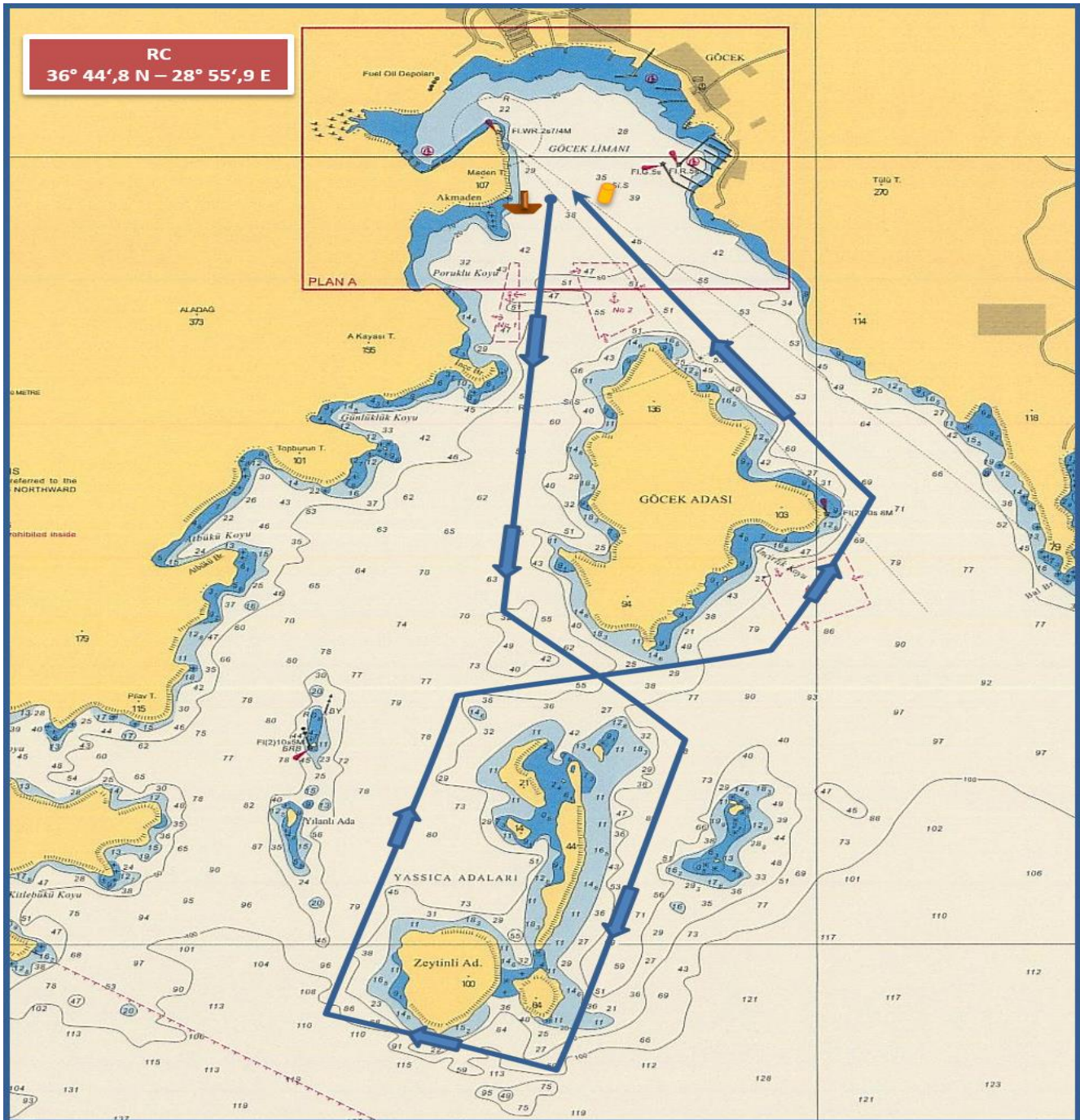


## **COURSE (ROTA) 2G - IRC & IRC CHARTER & CHARTER & FRESHMAN CLASSES**

### **ALL CLASSES**

- **START (GÖCEK)** pass GÖCEK ISLAND to port, pass YASSICA ISLAND to starboard, pass ZEYTİNLİ ISLAND to starboard, pass YASSICA ISLAND to starboard, pass GÖCEK ISLAND to port, **FINISH (GÖCEK)**  
**DISTANCE :~ 9,0 NM**
- **START (GÖCEK)**, GÖCEK ADASI iskelede geçiş, YASSICA ADALARI sancakta geçiş, ZEYTİNLİ ADA sancakta geçiş, YASSICA ADA sancakta geçiş, GÖCEK ADASI iskelede geçiş, **FINISH (GÖCEK koy içi)** **MESAFE : ~ 9,0 DM**



The place of RC boat and marks at the starting and finishing lines are approximate.  
Start ve finish hatlarındaki şamandıra ve komite botu yerleri yaklaşıkştir.