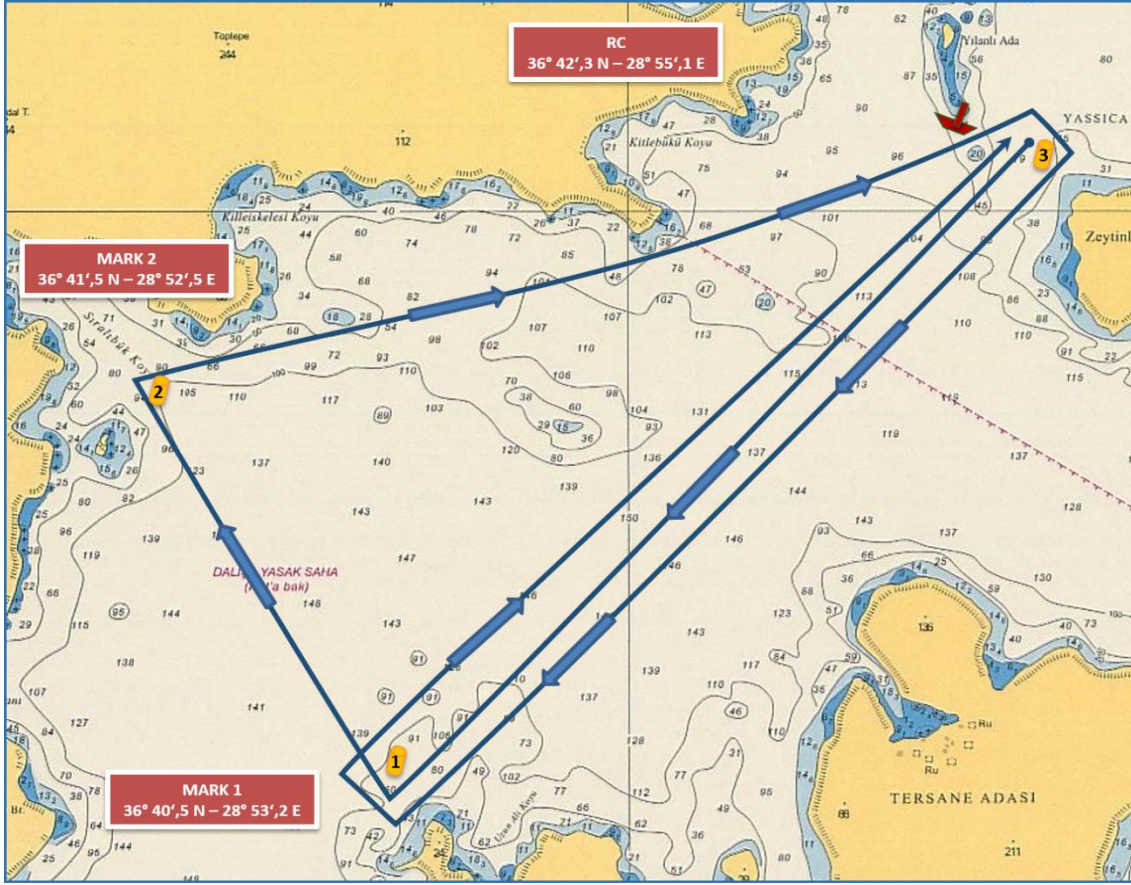


### COURSE (ROTA) 3A - IRC CLASSES

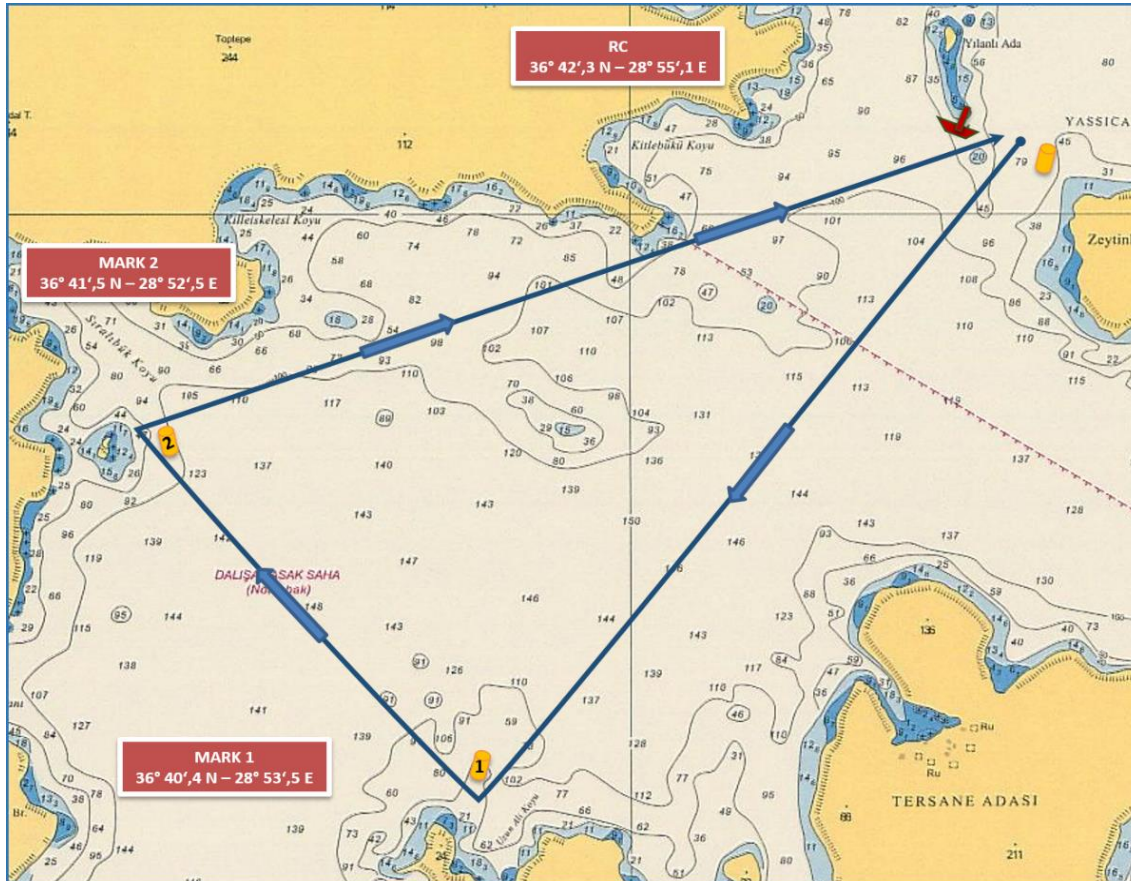


### IRC CLASSES

START (YILANLI ISLAND)  
(36°42',3 N - 28°55',1 E)  
MARK 1 to starboard  
MARK 2 to starboard  
MARK 3 to starboard  
MARK 1 to starboard  
FINISH (YILANLI ISLAND)  
(~ 10,5 NM)

START (YILANLI ADA)  
(36°42',3 N - 28°55',1 E)  
ŞAMANDIRA 1 sancakta  
ŞAMANDIRA 2 sancakta  
ŞAMANDIRA 3 sancakta  
ŞAMANDIRA 1 iskelede  
FINISH (YILANLI ADA)  
(~ 10,5 DM)

### COURSE (ROTA) 3A - IRC CHARTER & CHARTER & FRESHMAN CLASSES



### IRC CHRT. & CHARTER & FRESHMAN CLASSES

START (YILANLI ISLAND)  
(36°42',3 N - 28°55',1 E)  
MARK 1 TO STARBOARD  
MARK 2 STARBOARD  
FINISH (YILANLI ISLAND)  
(~ 6,0 NM)

START (YILANLI ADA)  
(36°42',3 N - 28°55',1 E)  
ŞAMANDIRA 1 SANCAKTA  
ŞAMANDIRA 2 SANCAKTA  
FINISH (YILANLI ADA)  
(~ 6,0 DM)

The place of RC boat and marks at the starting and finishing lines are approximate.  
Start ve finish hatlarındaki şamandra ve komite botu yerleri yaklaşıkştir.