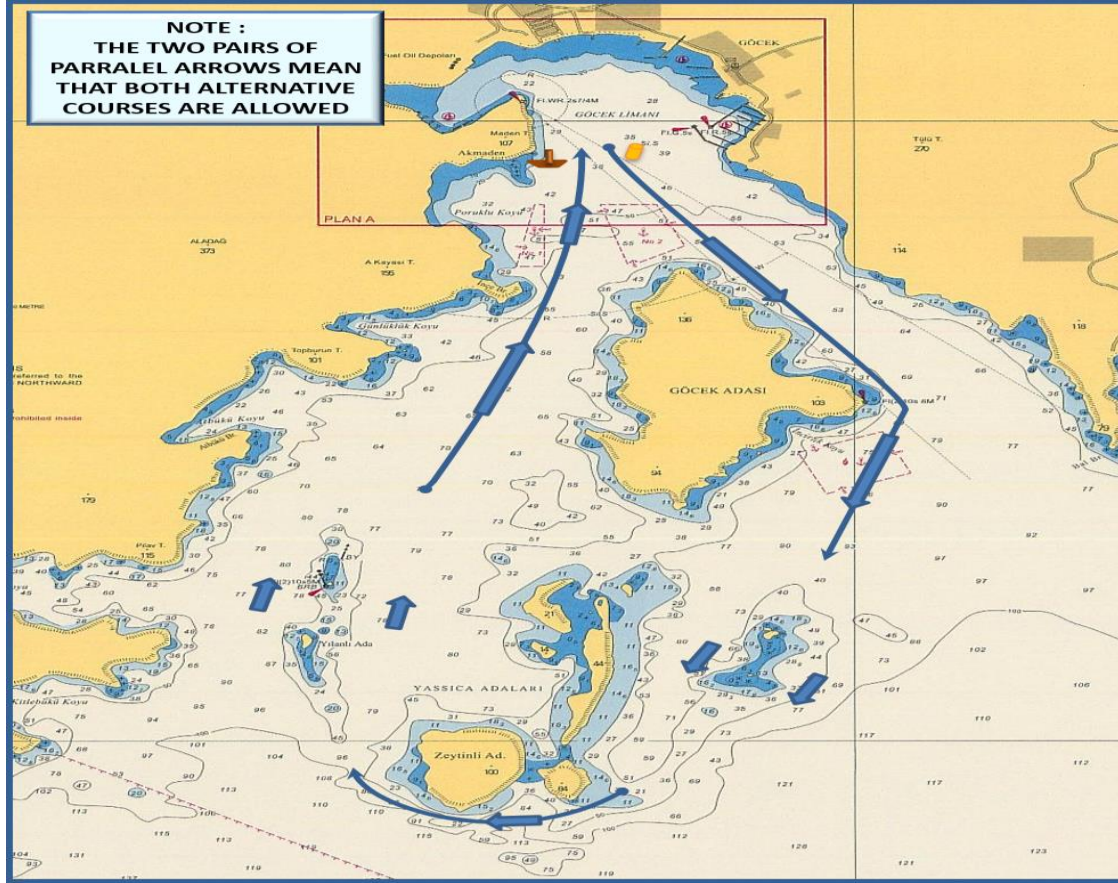


### COURSE (ROTA) 2B - IRC CLASSES

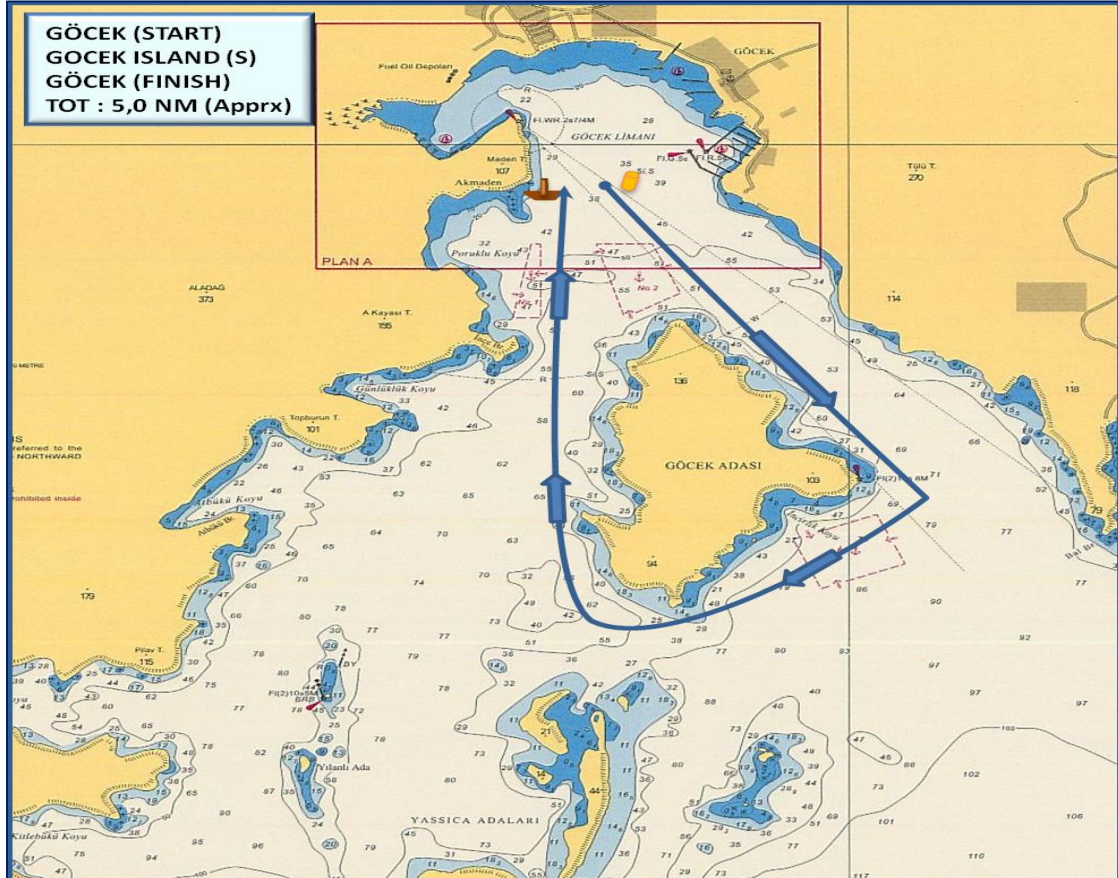


### IRC CLASSES

**START (GÖCEK)**  
GÖCEK ISLAND to starboard  
YASSICA ISLAND to starboard  
ZEYTİNLİ ISLAND to starboard  
YASSICA ISLAND to starboard  
GÖCEK ISLAND to starboard  
**FINISH (GÖCEK)**  
**DISTANCE : ~ 7,5 NM**  
**TIME LIMIT: 150 Minutes**

**START (GÖCEK)**  
GÖCEK ADASI sancakta  
YASSICA ADALARI sancakta  
ZEYTİNLİ ADASI sancakta  
YASSICA ADALARI sancakta  
GÖCEK ADASI sancakta  
**FINISH (GÖCEK koyu içi)**  
**MESAFE : ~ 7,5 DM**  
**ZAMAN LİMİTİ: 150 Dakika**

### COURSE (ROTA) 2B – CHARTER & FRESHMAN CLASSES



### CHARTER & FRESHMAN CLASSES

**START (GOCEK)**  
GOCEK ISLAND to starboard  
**FINISH (GOCEK)**  
**DISTANCE : ~ 5,0 NM**  
**TIME LIMIT: 100 Minutes**

**START (GÖCEK)**  
GÖCEK ADASI sancakta  
**FINISH (GÖCEK)**  
**MESAFE : ~ 5,0 DM**  
**ZAMAN LİMİTİ: 100 Dakika**

The place of RC boat and marks at the starting and finishing lines are approximate.  
Start ve finish hatlarındaki şamandra ve komite botu yerleri yaklaşıkştir.