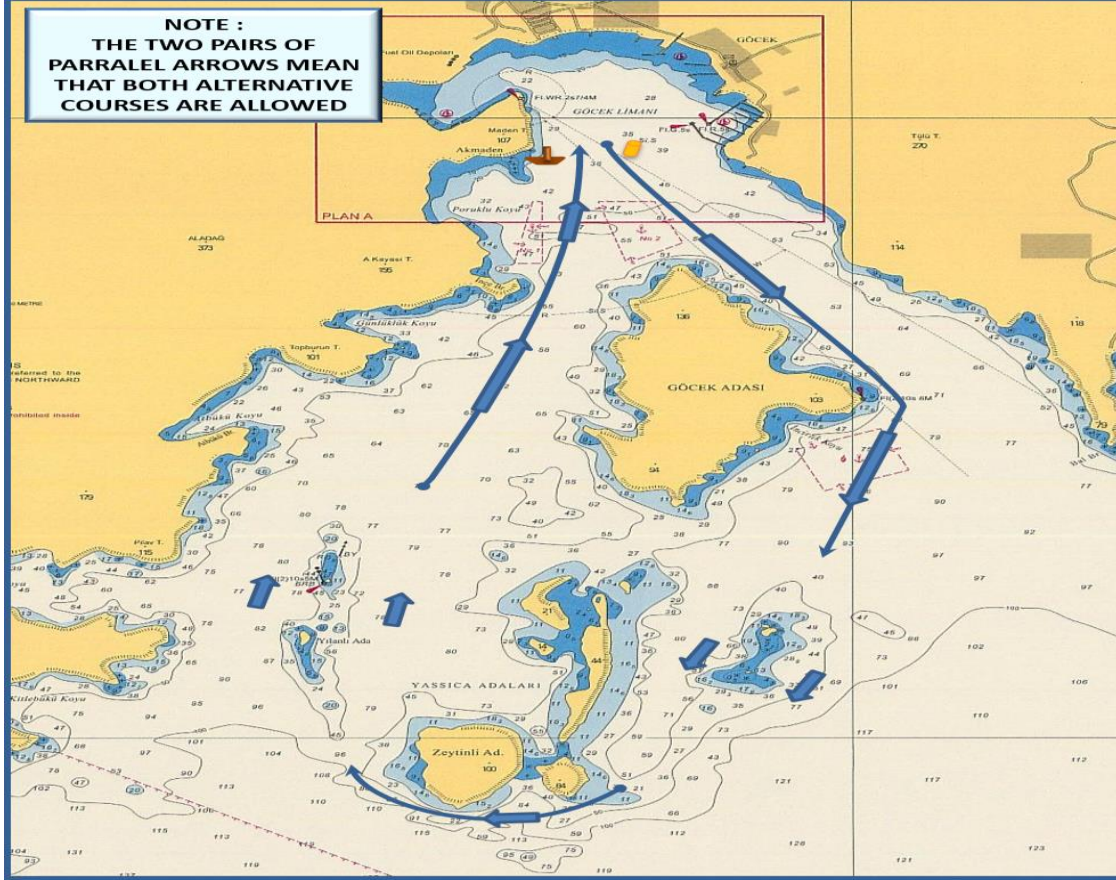


### COURSE (ROTA) 2B - IRC CLASSES

**NOTE :**  
THE TWO PAIRS OF  
PARRALEL ARROWS MEAN  
THAT BOTH ALTERNATIVE  
COURSES ARE ALLOWED



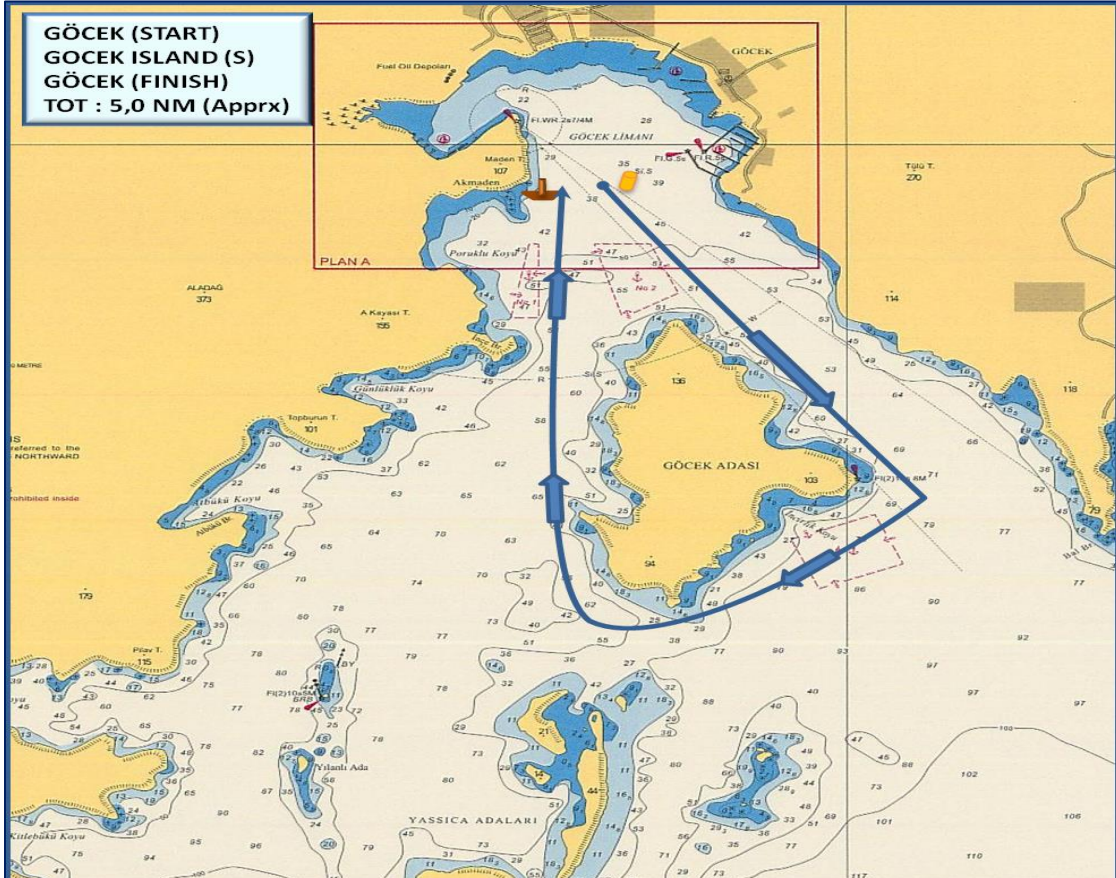
### IRC CLASSES

**START (GÖCEK)**  
GÖCEK ISLAND to starboard  
YASSICA ISLAND to starboard  
ZEYTİNLİ ISLAND to starboard  
YASSICA ISLAND to starboard  
GÖCEK ISLAND to starboard  
**FINISH (GÖCEK)**  
DISTANCE : ~ 7,5 NM

**START (GÖCEK)**  
GÖCEK ADASI sancakta  
YASSICA ADALARI sancakta  
ZEYTİNLİ ADASI sancakta  
YASSICA ADALARI sancakta  
GÖCEK ADASI sancakta  
**FINISH (GÖCEK koyu içi)**  
MESAFE : ~ 7,5 DM

### COURSE (ROTA) 2B – IRC CHARTER & CHARTER & FRESHMAN CLASSES

**GÖCEK (START)**  
GOCEK ISLAND (S)  
GÖCEK (FINISH)  
TOT : 5,0 NM (Apprx)



### IRC CHRT. & CHARTER & FRESHMAN CLASSES

**START (GOCEK)**  
GOCEK ISLAND to starboard  
**FINISH (GOCEK)**  
(~ 5,0 NM)

**START (GÖCEK)**  
GÖCEK ADASI sancakta  
**FINISH (GÖCEK)**  
(~ 5,0 DM)

The place of RC boat and marks at the starting and finishing lines are approximate.  
Start ve finish hatlarındaki şamandıra ve komite botu yerleri yaklaşıkştir.