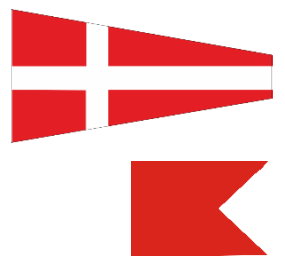




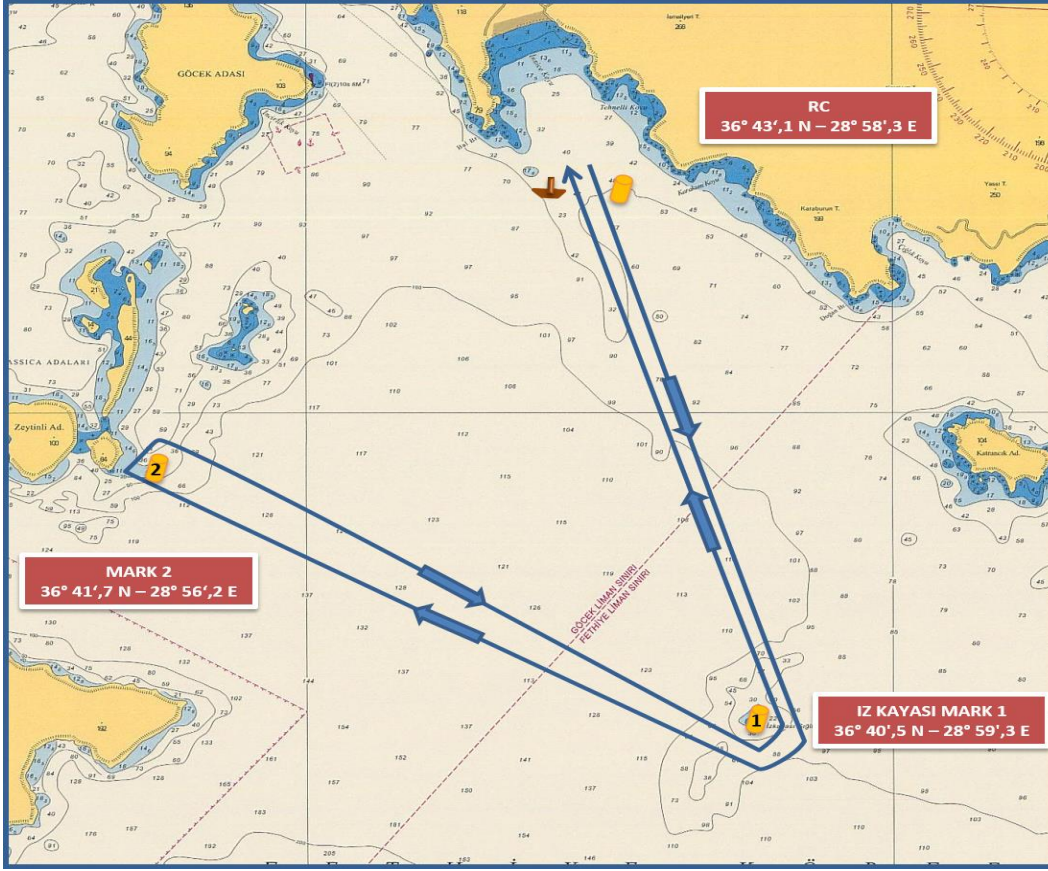
GÖCEK YACHT CLUB

COURSE 4B - ROTA 4B

Coastal courses / Coğrafik rotalar



COURSE (ROTA) 4B - IRC CLASSES

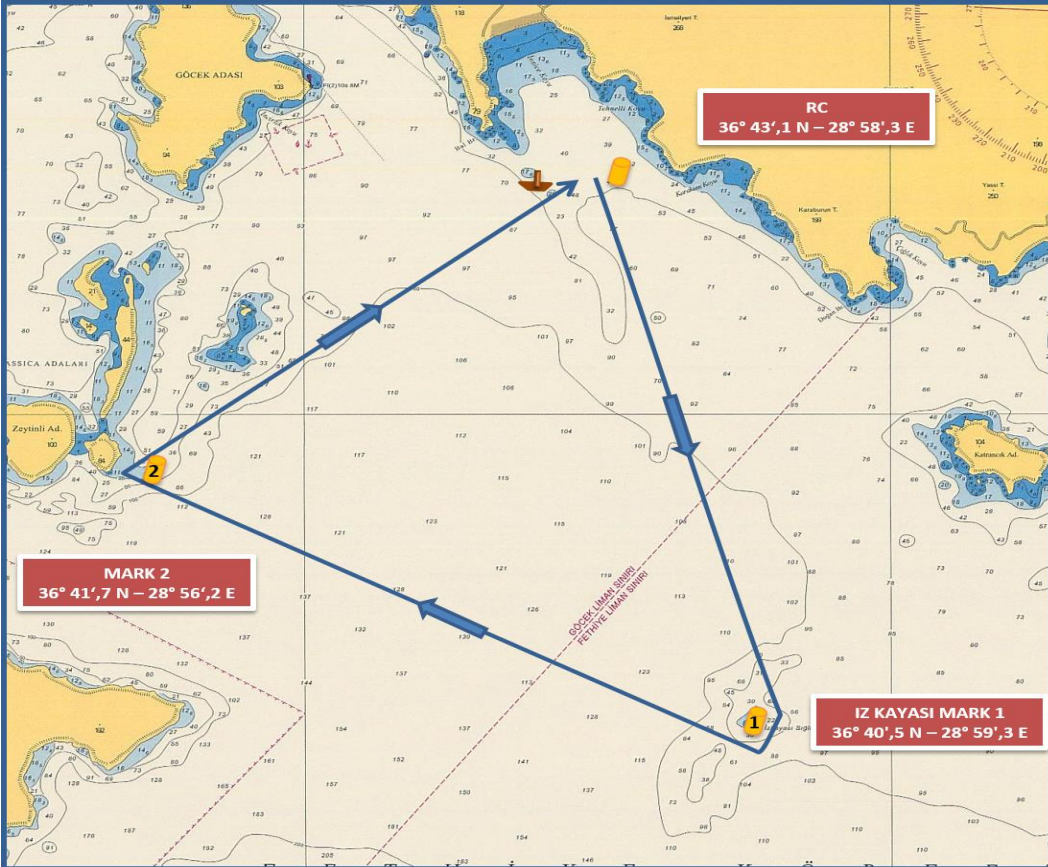


IRC CLASSES

START (İNLİCE)
(36°43',1 N – 28°58',3 E)
IZKAYASI MARK 1 to starboard
MARK 2 to starboard
IZKAYASI MARK 1 to port
FINISH (İNLİCE)
(~ 11,0 NM)

START (İNLİCE)
(36°43',1 N – 28°58',3 E)
İZKAYASI ŞAMAND. 1 sancakta
ŞAMANDIRA 2 sancakta
İZKAYASI ŞAMAND. 1 iskelede
FINISH (İNLİCE)
(~ 11,0 DM)

COURSE (ROTA) 4B – IRC CHARTER & CHARTER & FRESHMAN CLASSES



IRC CHRT. & CHARTER & FRESHMAN CLASSES

START (İNLİCE)
(36°43',1 N – 28°58',3 E)
IZKAYASI MARK 1 to starboard
MARK 2 to starboard
FINISH (İNLİCE)
(~ 8,0 NM)

START (İNLİCE)
(36°43',1 N – 28°58',3 E)
İZKAYASI ŞAMAND. 1 sancakta
ŞAMANDIRA 2 sancakta
FINISH (İNLİCE)
(~ 8,0 DM)

The place of RC boat and marks at the starting and finishing lines are approximate.
Start ve finish hatlarındaki şamandıra ve komite botu yerleri yaklaşıkştir.