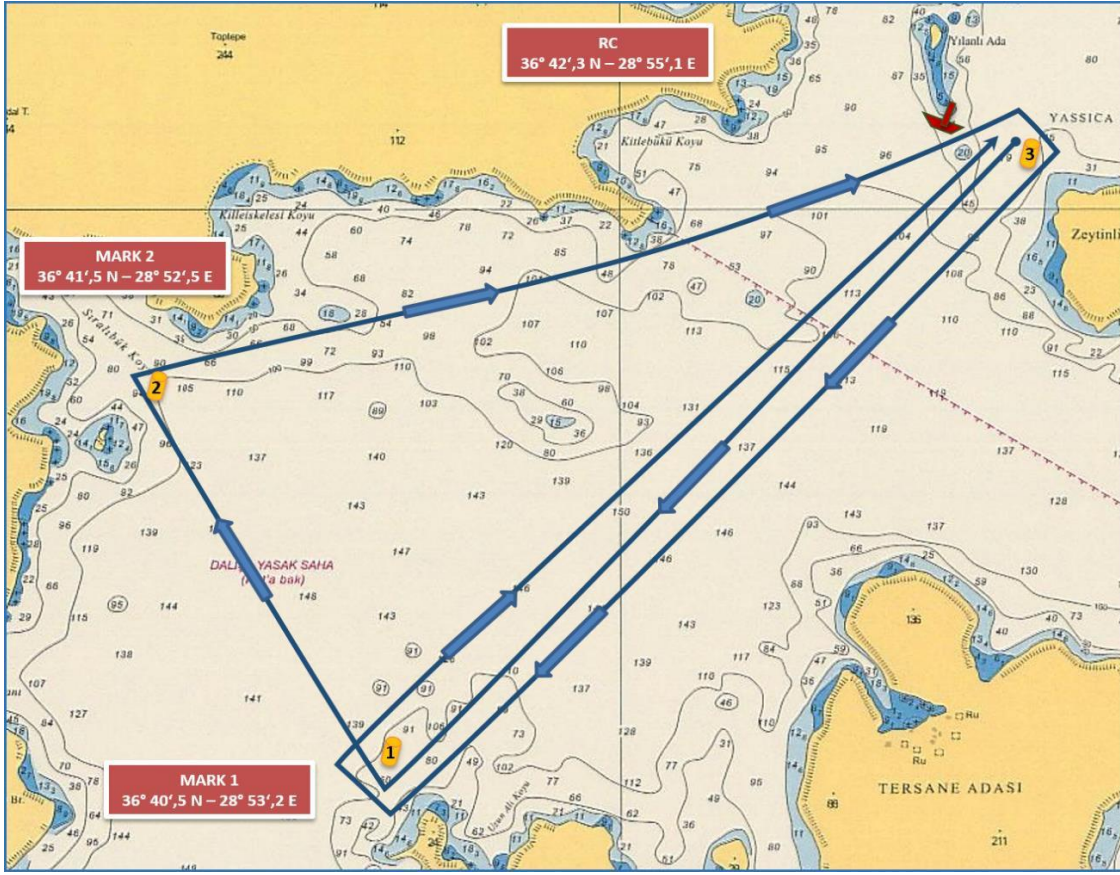


COURSE (ROTA) 3A - IRC CLASS

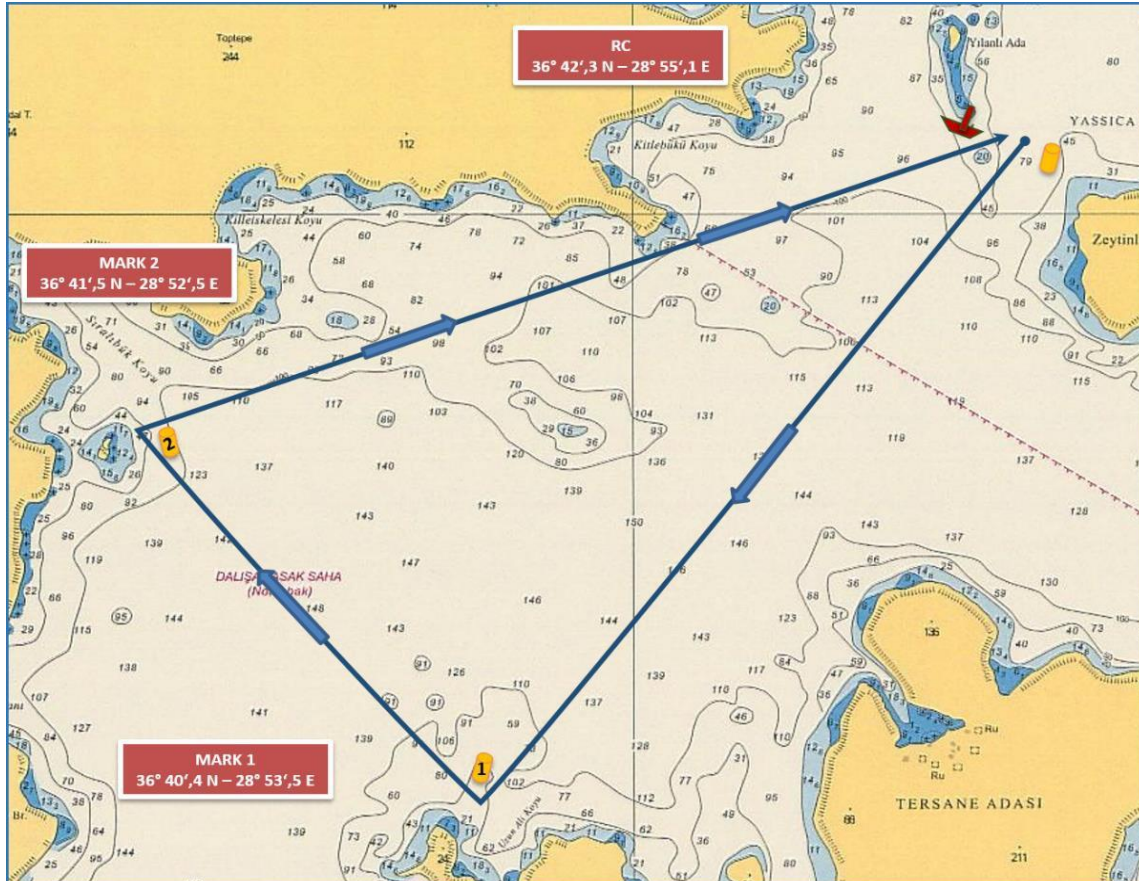


IRC CLASS

START (YILANLI ISLAND)
(36°42',3 N – 28°55',1 E)
MARK 1 to starboard
MARK 2 to starboard
MARK 3 to starboard
MARK 1 to starboard
FINISH (YILANLI ISLAND)
(~ 10,5 NM)

START (YILANLI ADA)
(36°42',3 N – 28°55',1 E)
ŞAMANDIRA 1 sancakta
ŞAMANDIRA 2 sancakta
ŞAMANDIRA 3 sancakta
ŞAMANDIRA 1 sancakta
FINISH (YILANLI ADA)
(~ 10,5 DM)

COURSE (ROTA) 3A – IRC CHARTER & FRESHMAN CLASSES



IRC CHARTER & FRESHMAN CLASSES

START (YILANLI ISLAND)
(36°42',3 N – 28°55',1 E)
MARK 1 TO STARBOARD
MARK 2 STARBOARD
FINISH (YILANLI ISLAND)
(~ 6,0 NM)

START (YILANLI ADA)
(36°42',3 N – 28°55',1 E)
ŞAMANDIRA 1 SANCAKTA
ŞAMANDIRA 2 SANCAKTA
FINISH (YILANLI ADA)
(~ 6,0 DM)

The place of RC boat and marks at the starting and finishing lines are approximate.
Start ve finish hatlarındaki şamandra ve komite botu yerleri yaklaşıktır.