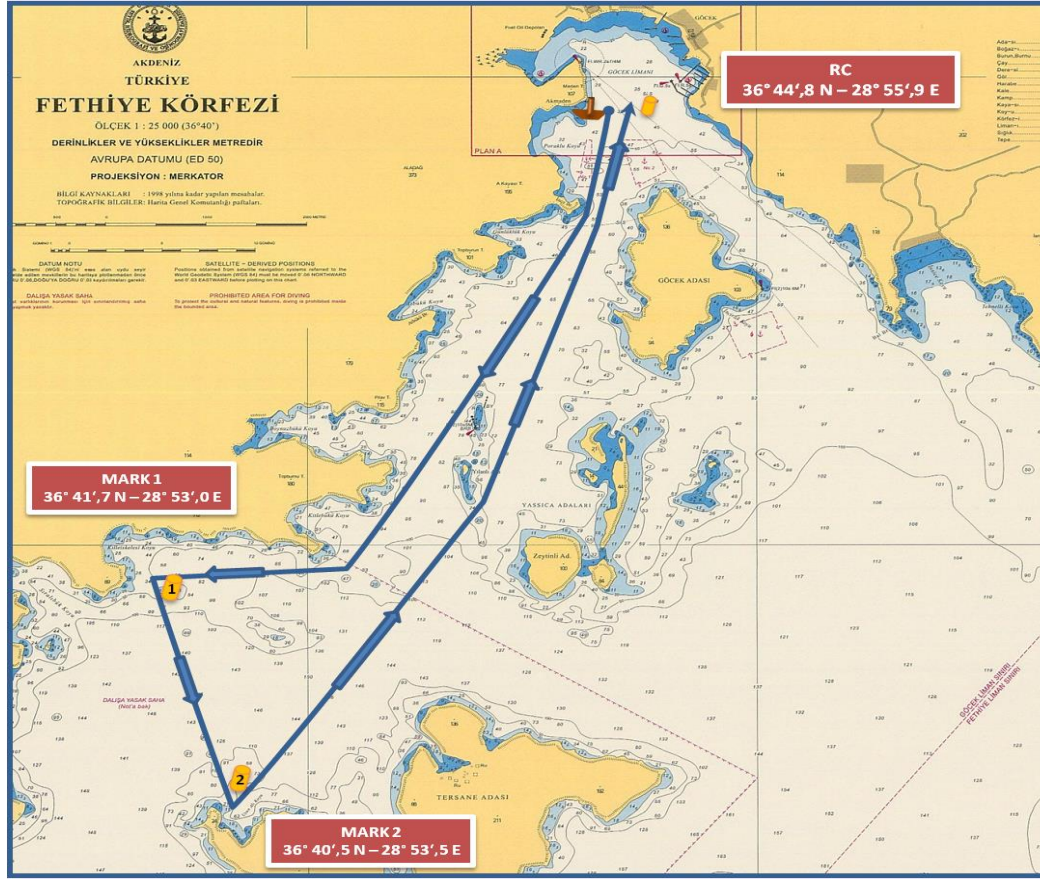


COURSE (ROTA) 2E - IRC CLASSES



IRC CLASSES

START (GÖCEK)

GÖCEK ISLAND to port

SHALLOW BUOY to port

YILANLI ISLAND to port

MARK 1 to port - MARK 2 to port

YILANLI ISLAND to port

SHALLOW BUOY to port

GÖCEK ISLAND to starboard

FINISH (GÖCEK) DISTANCE: ~10,5 NM

START (GÖCEK)

GÖCEK ADASI iskelede

SIĞLIK FENERİ iskelede

YILANLI ADA iskelede

ŞAMD.1 iskelede – ŞAMD.2 iskelede

YILANLI ADA iskelede

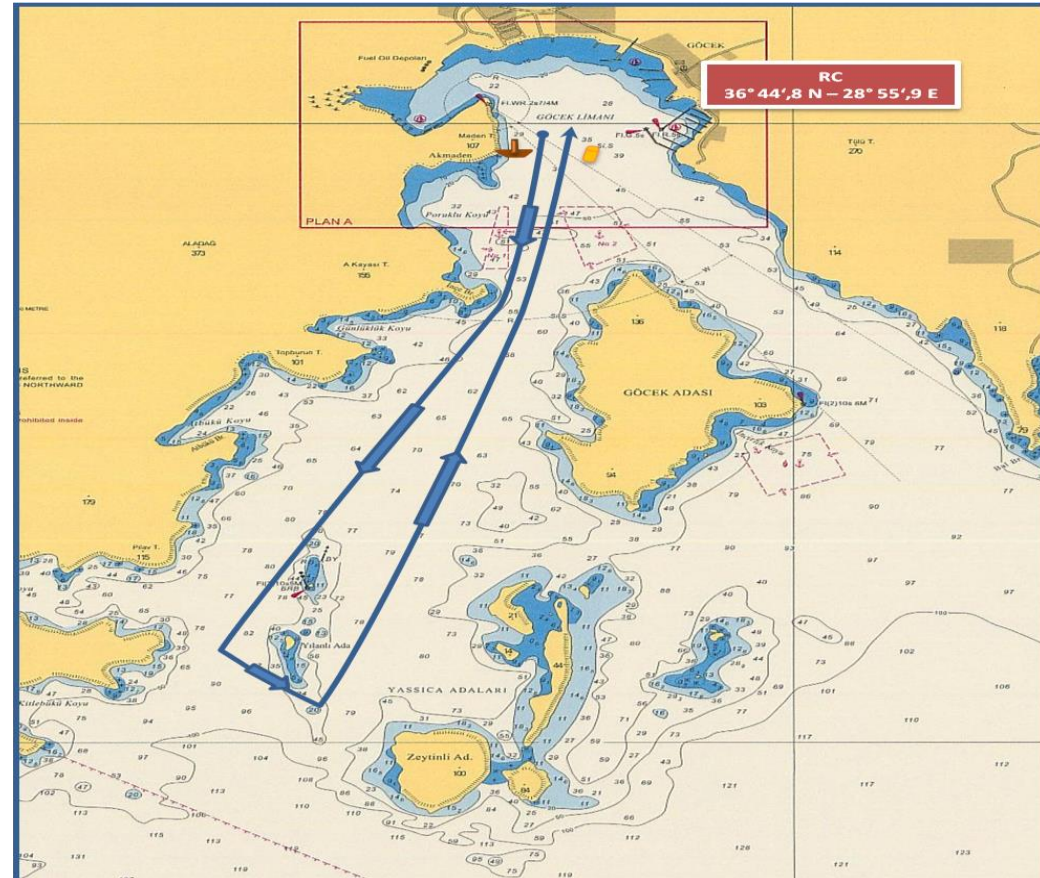
SIĞLIK FENERİ iskelede

GÖCEK ADASI sancakta

FINISH (GÖCEK koy içi)

MESAFE : ~ 10,5 DM

COURSE (ROTA) 2E – IRC CHARTER & CHARTER & FRESHMAN CLASSES



IRC CHRT. & CHARTER & FRESHMAN CLASSES

START (GÖCEK)

GÖCEK ISLAND to port

SHALLOW BUOY to port

YILANLI ISLAND to port

GÖCEK ISLAND to starboard

FINISH (GÖCEK)

DISTANCE : ~ 6,0 NM

START (GÖCEK)

GÖCEK ADASI iskelede

SIĞLIK FENERİ iskelede

YILANLI ADA iskelede

GÖCEK ADASI sancakta

FINISH (GÖCEK)

MESAFE : ~ 6,0 DM

The place of RC boat and marks at the starting and finishing lines are approximate.
Start ve finish hatlarındaki şamandıra ve komite botu yerleri yaklaşıkştir.