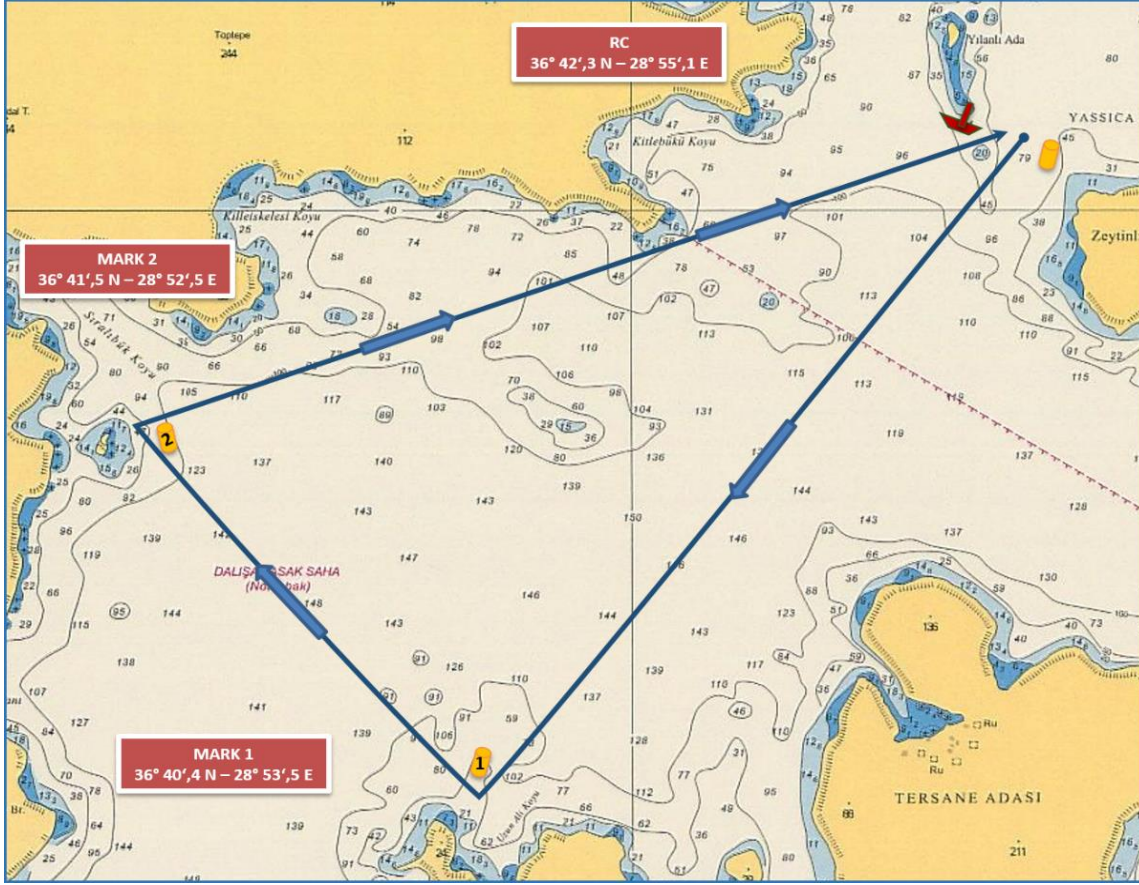


### COURSE (ROTA) 3B - IRC CLASSES

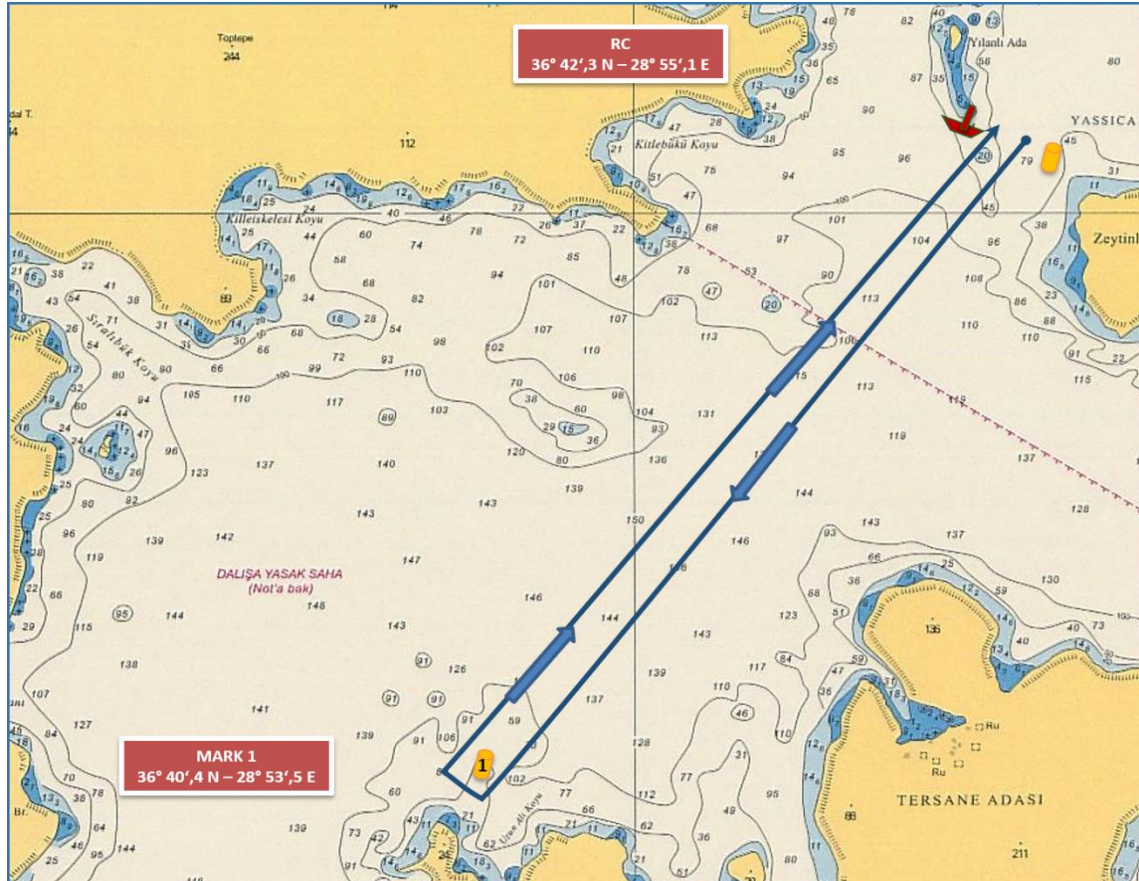


### IRC CLASSES

START (YILANLI ISLAND)  
(36°42',3 N - 28°55',1 E)  
MARK 1 TO STARBOARD  
MARK 2 STARBOARD  
FINISH (YILANLI ISLAND)  
(~ 6,0 NM)

START (YILANLI ADA)  
(36°42',3 N - 28°55',1 E)  
ŞAMANDRA 1 SANCAKTA  
ŞAMANDIRA 2 SANCAKTA  
FINISH (YILANLI ADA)  
(~ 6,0 DM)

### COURSE (ROTA 3B) – IRC CHARTER & CHARTER & FRESHMAN CLASSES



### IRC CHRT. & CHARTER & FRESHMAN CLASSES

START (YILANLI ISLAND)  
(36°42',3 N - 28°55',1 E)  
MARK 1 TO STARBOARD  
FINISH (YILANLI ISLAND)  
(~ 4,0 NM)

START (YILANLI ADA)  
(36°42',3 N - 28°55',1 E)  
ŞAMANDRA 1 SANCAKTA  
FINISH (YILANLI ADA)  
(~ 4,0 DM)

The place of RC boat and marks at the starting and finishing lines are approximate.  
Start ve finish hatlarındaki şamandra ve komite botu yerleri yaklaşıkştir.