



ROTA CARD

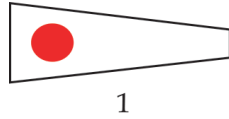


ONLINE NOTICE BOARD

Race Committee boat positions and locations are provided for information purposes only and do not represent their exact positions.

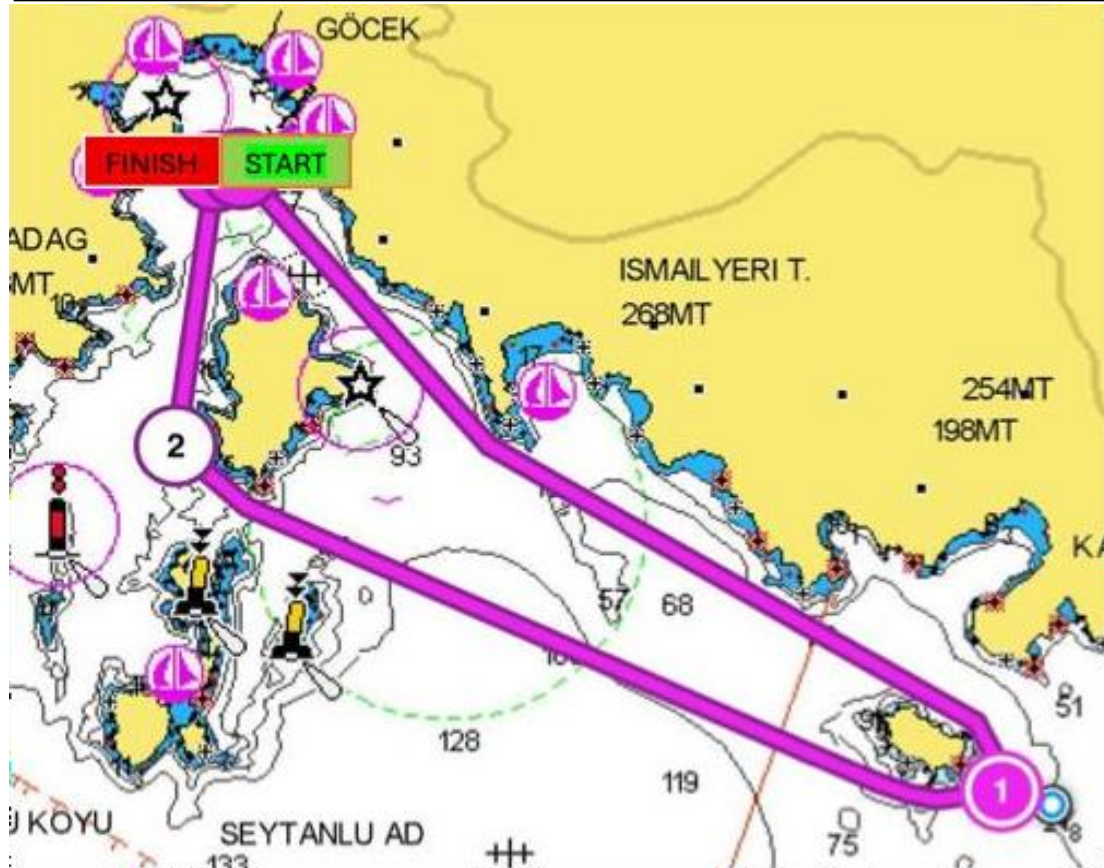
Course 1

START
GÖCEK ISLAND (to STARBOARD)
1 -KATRANCIK ISLAND (to STARBOARD)
2- GÖCEK ISLAND (to STARBOARD)
FINISH



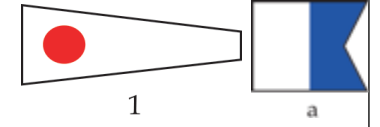
Approximately 12 NM

Time Limit: **Sunset**



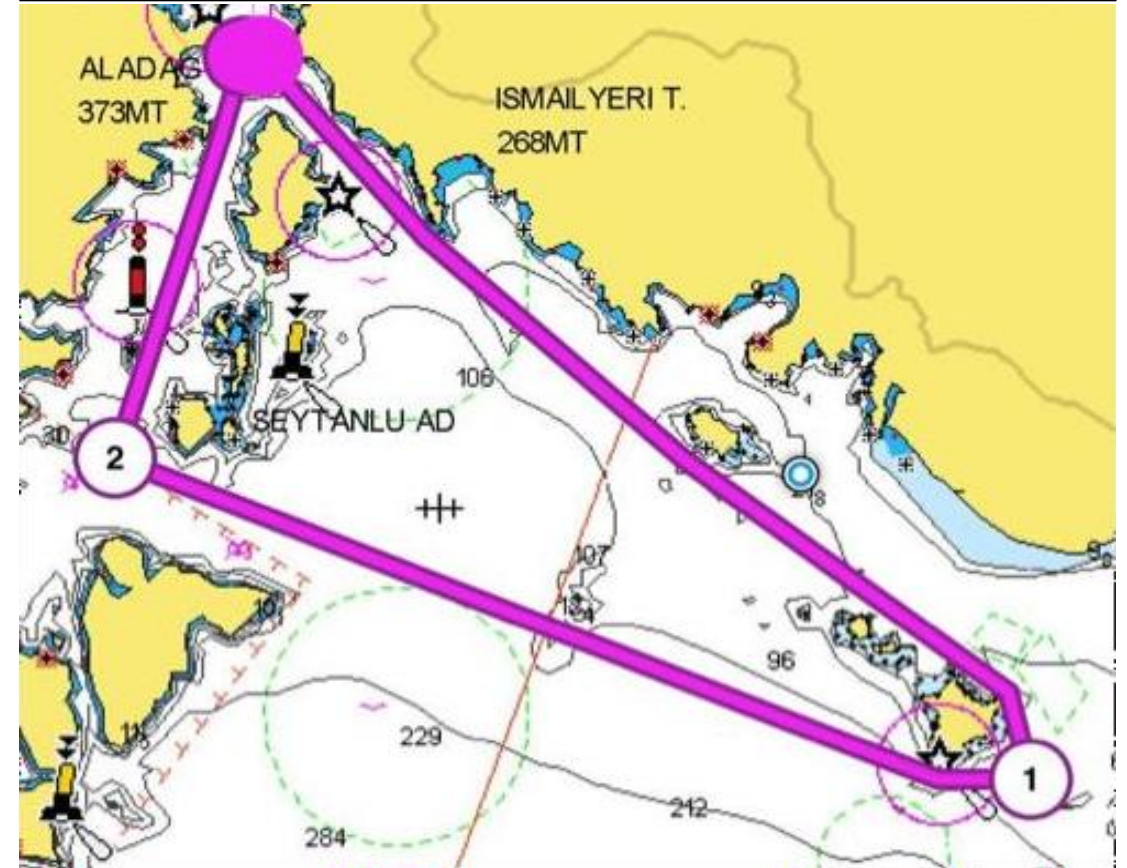
Course 1A

START
GÖCEK ISLAND (to STARBOARD)
1 -KATRANCIK ISLAND (to STARBOARD)
2- ZEYTİNLİ ISLAND (to STARBOARD)
GÖCEK ISLAND (to STARBOARD)
FINISH



Approximately 15 NM

Time Limit: **Sunset**



Course - 2



2

START

- 1- GÖCEK ISLAND (to PORT)
 - 2- YASSICALAR ISLET CARDINAL BUOYS NORTH & SOUTH (to STARBOARD)
 - 3- SEYTANLI & ZEYTİNLİ ISLAND (to STARBOARD)
 - 4- GÖCEK ISLAND (to PORT)
- FINISH

Approximately 8 NM

Time Limit: 180



Course – 2A



a

START

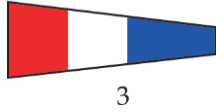
- 1- GÖCEK ISLAND (to STARBOARD²)
 - 2- YASSICALAR & ZEYTİNLİ AND SEYTANLI ISLANDS (to PORT)
 - 3- YASSICALAR ISLET CARDINAL BUOYS NORTH & SOUTH (to PORT)
 - 4- GÖCEK ISLAND (to STARBOARD)
- FINISH

Approximately 8 NM

Time Limit: 180



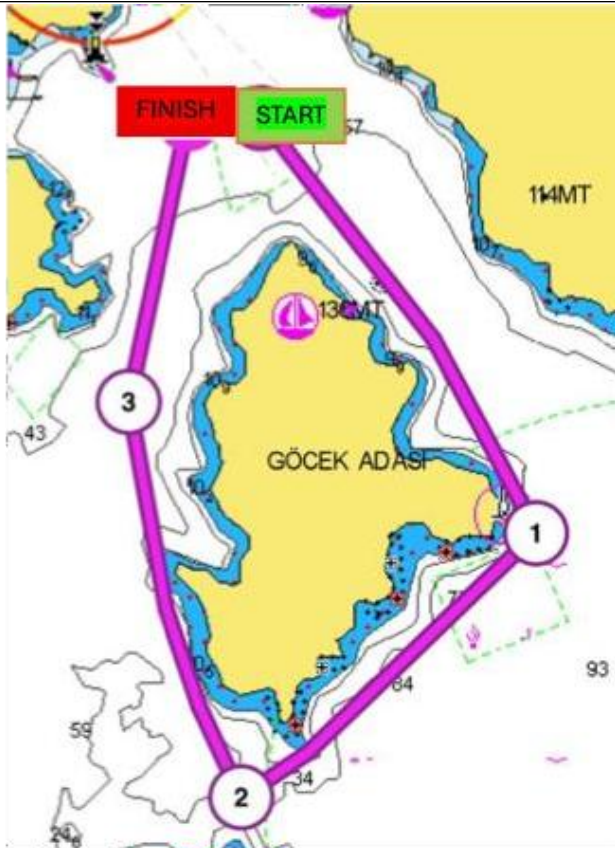
Course - 3



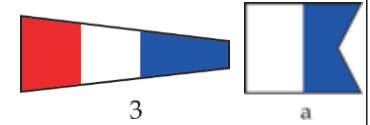
START
AROUND THE GÖCEK ISLAND to STARBOARD
FINISH

Approximately 4 NM

Time Limit: 120



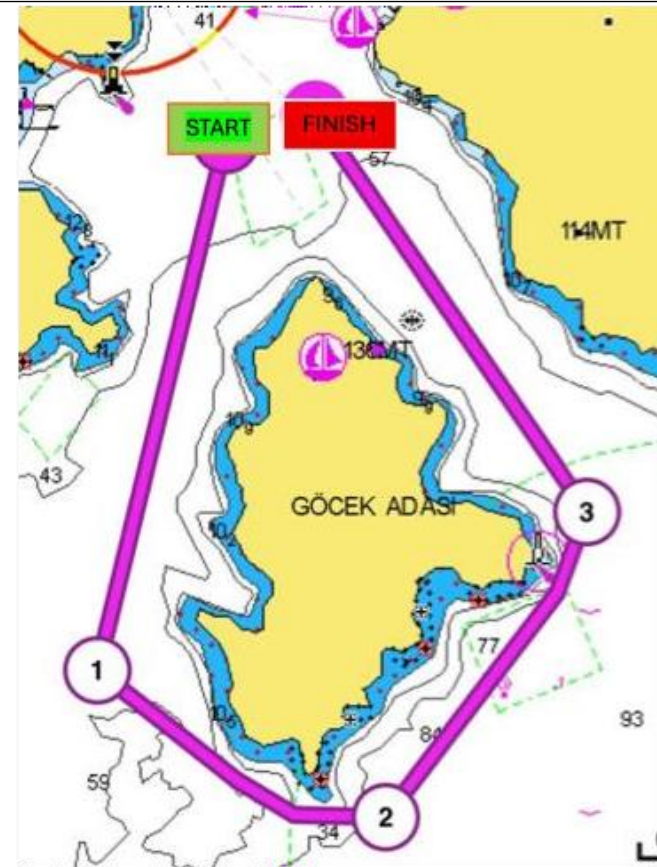
Course - 3A



START
AROUND THE GÖCEK ISLAND to PORT
FINISH

Approximately 4 NM

Time Limit: 120



Course - 4



4

START
MARK 1 to STARBOARD
MARK 2 to STARBOARD
MARK 3 to STARBOARD
MARK 1 to STARBOARD
FINISH

Approximately 7 NM

Time Limit: 180



Course - 4A



4

a

START
MARK 1 to STARBOARD
MARK 2 to STARBOARD
FINISH

Approximately 7 NM

Time Limit: 180



Course - 5

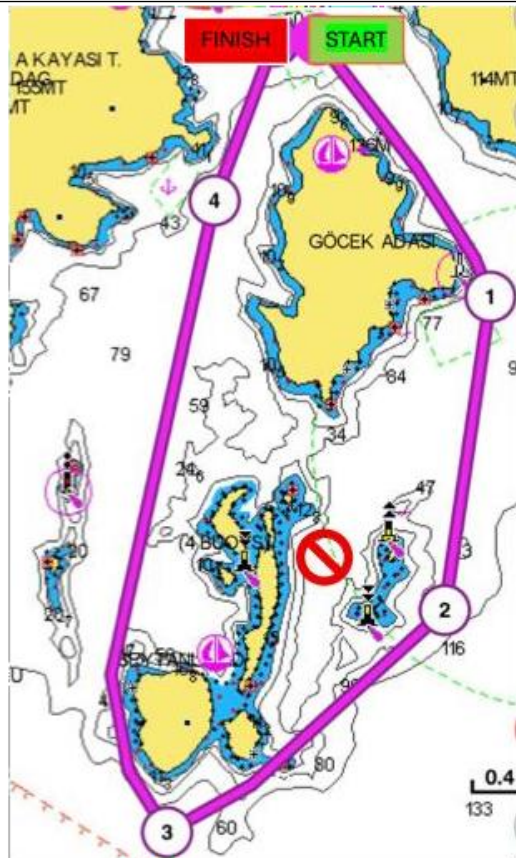


5

- START
1- GÖCEK ISLAND (to STARBOARD)
2- YASSICIALAR ISLET CARDINAL BUOYS NORTH & SOUTH (to STARBOARD)
3- SEYTANLI & ZEYTİNLİ ISLAND (to STARBOARD)
4- GÖCEK ISLAND (to STARBOARD)
FINISH

Approximately **6 NM**

Time Limit: **120**



Course – 5A



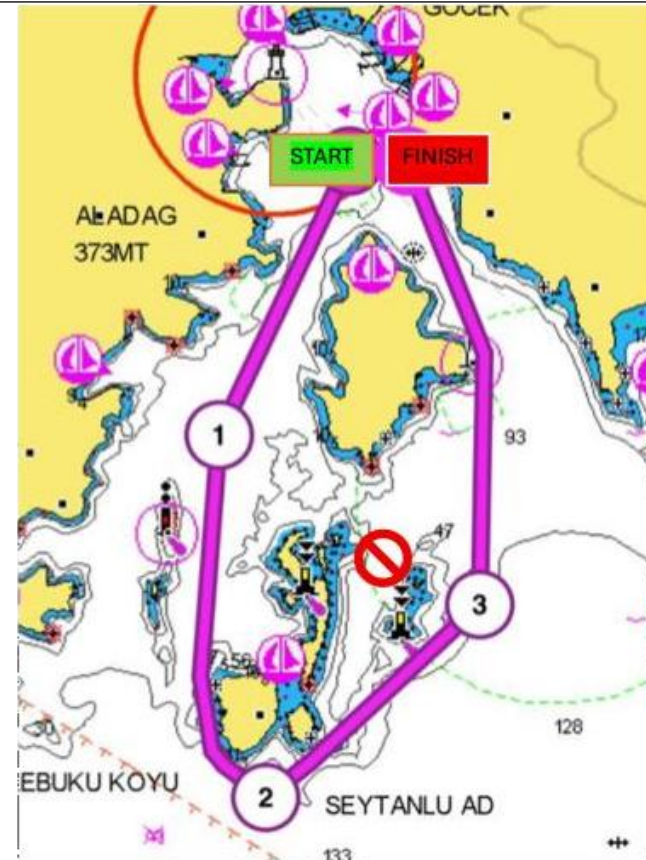
5

a

- START
1- GÖCEK ISLAND (to PORT)
2- YASSICIALAR ISLET CARDINAL BUOYS NORTH & SOUTH (to PORT)
3- SEYTANLI & ZEYTİNLİ ISLAND (to PORT)
4- GÖCEK ISLAND (to PORT)
FINISH

Approximately **6 NM**

Time Limit: **120**



Course - 6

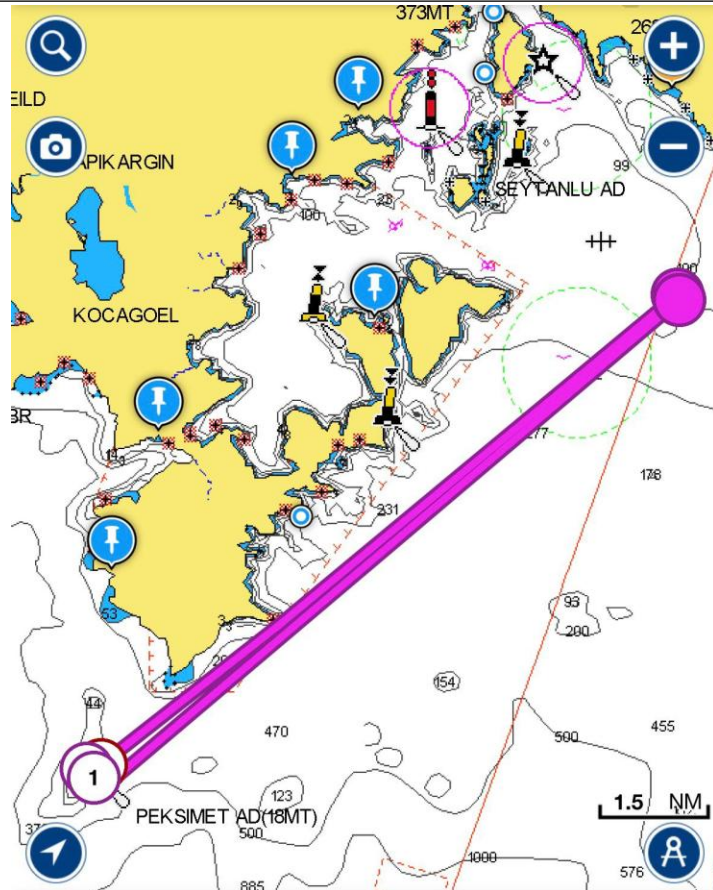
START
1- PEKSİMET ISLAND
FINISH

(to STARBOARD) 6



Approximately 20 NM

Time Limit: **Sunset**



Course - 6A

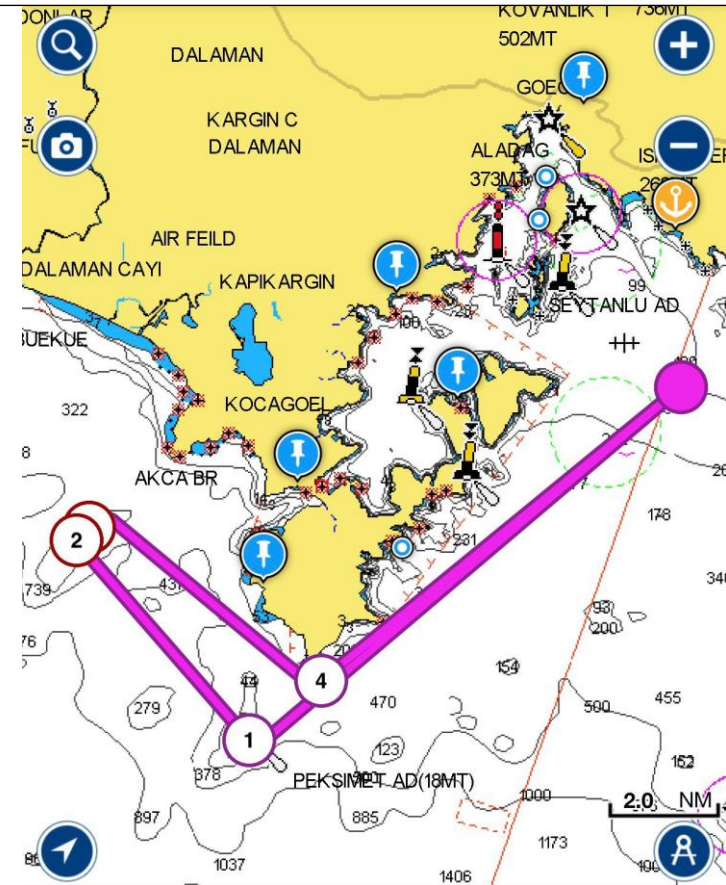
START
1- PEKSİMET ISLAND
2- NAR ADASI
3- SIĞLIKLAR
4- KURTOĞLU BURNU
FINISH

(to STARBOARD)
(to STARBOARD)
(to STARBOARD)
(to PORT)



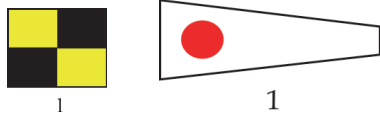
Approximately 30 NM

Time Limit: **Sunset**

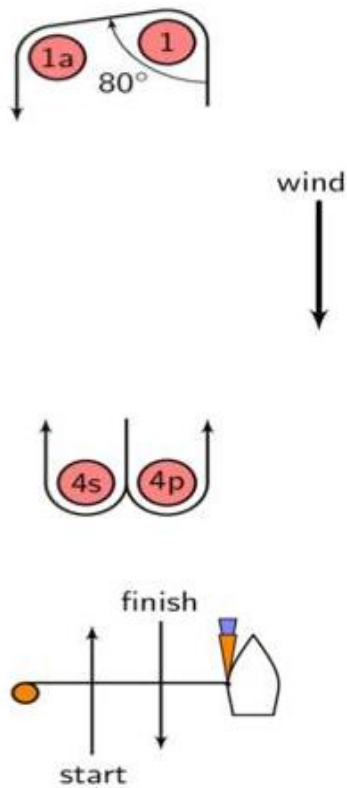


Course – L1 / Course – L2

L1 START - 1 - 1A - 4S/4P - 1 - 1A – FINISH
 Approximately **6 NM**
 Time Limit: **120** / 30 min to 1st



L2 START - 1 - 1A – FINISH
 Approximately **4 NM**
 Time Limit: **90** / 30 min to 1st

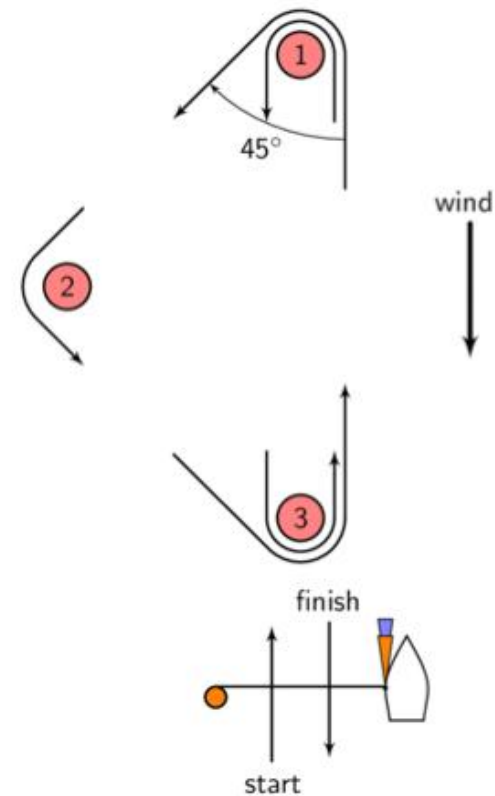


Course – L3 / Course – L4

L3 START - 1 - 2 - 3 - 1 – FINISH
 Approximately **8 NM**
 Time Limit: **180** / 30 min to 1st



L4 START - 1 - 2 - FINISH
 Approximately **5 NM**
 Time Limit: **180** / 30 min to 1st



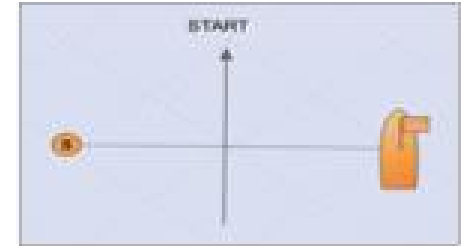
START LINE

The starting line will be established between a staff displaying an Orange flag on the Race Committee boat flying the RC flag and the starting (pin-end) mark laid to port, or a RC-flagged RIB displaying an Orange flag.

In order to set the starting line as close as possible to the wind direction, the Race Committee may use a Windward Offset mark. The Race Committee will signal, before the warning signal, whether this mark shall be left to starboard by displaying a Green flag or to port by displaying a Red flag.

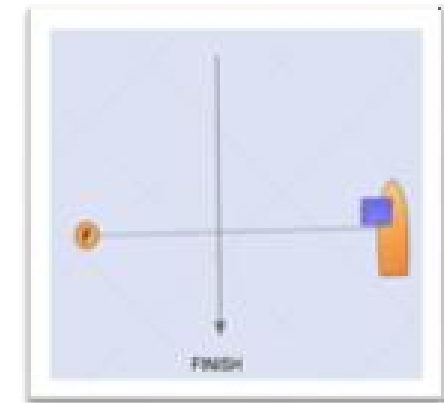
If a Windward Offset mark is in use:

- **GREEN flag displayed / 1** – OFFSET MARK TO STARBOARD
- **RED flag displayed / 1** – OFFSET MARK TO PORT



FINISH LINE

The finishing line will be established between a staff displaying a **Blue flag** on the Race Committee boat flying the RC flag and the finishing mark. At the finish, the mark shall be left to starboard.



PLACEMENT OF FLAGS, PANNENTS, STICKERS AND NUMBERS

* No flags shall be displayed during the regatta except the shown flags on the diagram.

* Please ensure that the hull of your boat is clean and dry where you stick the Hull Number

